

CASE STUDY

TURNING USED GLASS INTO OPPORTUNITY



GLASS BOTTLES

We see them everywhere - in restaurants, hotels, recycling bins, landfills. But what if those bottles could become part of something bigger? What if they could be transformed into something new, again and again, with less effort, more safety, and a much smaller environmental footprint?

That's exactly where Pilot Crushtec International comes in. Their range of glass crushing and handling equipment isn't just about breaking bottles - it's about helping businesses of all sizes cut costs, operate more efficiently, and contribute to a cleaner world.

FROM CLUTTER TO CLEAN: MAKING SPACE & SAVING MONEY

Crushing glass on-site can reduce its volume by up to 80%.
That's less clutter, fewer trips to disposal sites, and more room to breathe - literally and financially.

Smaller spaces?

The Rompi™ Glass Crusher is ideal for places like hotels, bars, and restaurants.
Compact, quiet and efficient - it turns a pile of bottles into manageable cullet in no time.

Bigger volumes?

Pilot Crushtec's Vertical Shaft Autogenous Crushers (VSI) and Horizontal Shaft Impact Crushers (HSI) are perfect for high-throughput glass recycling operations.

- And it doesn't stop there. Add in Pilot Crushtec's conveyor system, and you've got a seamless setup that moves crushed glass straight to storage or even into a furnace.

Fewer handling steps = less time + less mess + fewer costs



SAFETY THAT YOU CAN SEE & FEEL

Anyone who's handled broken glass knows it's no joke.
Sharp edges, scattered shards, and heavy bins are a recipe for accidents.

- ✓ The Rompi™ is enclosed and safe to use, even in busy kitchen or bar environments.
- ✓ Larger crushers are built with workplace safety in mind, reducing manual handling and improving workflow.

And when things are safer, they're cleaner too.
Less broken glass lying around means tidier spaces, fewer hazards, and a better experience for staff and customers alike.

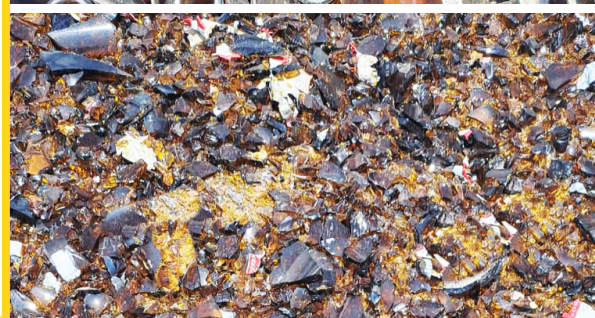
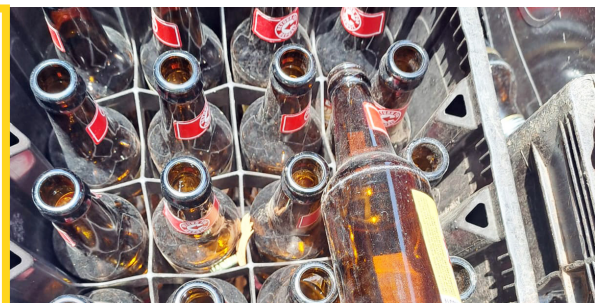


Whether you're crushing a few dozen bottles a day
or a few tons an hour, Pilot Crushtec has something that
fits your operational requirements.

1. Rompi™ handles hundreds of bottles an hour—right at the source.
2. VSI and HSI crushers crank through massive volumes with consistent, high-quality output. And with customizable conveyors, glass moves exactly where you need it
- no heavy lifting required.

The result?

Lower labor costs, fewer transport runs, and reduced machine downtime.
That's smart recycling that pays off.



Crushing glass isn't just about efficiency
-it's about doing the right thing.
And the environmental benefits are huge.

- Glass is **100% recyclable** - forever.
No loss in quality, no end to the cycle.
- Using recycled glass (cullet) saves up to **30% in energy** compared to raw material production.
- Every ton of recycled glass **saves over a ton of natural resources** like sand and limestone.
- Plus, crushed glass helps **divert waste from landfills**, where it could otherwise sit for thousands of years.

Less energy + less waste = lower carbon emissions,
something every business should be proud of.

RECYCLING THAT'S GOOD FOR BUSINESS & THE WORLD

FLEXIBLE SOLUTIONS FOR EVERY SIZE OPERATION

WHERE?	WHAT TO USE?	WHY IT WORKS?
Hotels, Bars, Restaurants	Rompi™ Glass Crusher	Small, quiet, fast, and safe to use right at the source. Does not need industrial electricity supply.
Large-Scale Recycling	1. Horizontal Shaft Impact Crusher IC50, 2. Twister VS100, Vertical Shaft Impact Crushers	Handles big volumes with consistent, fine cullet output
Large-Scale Recycling Conveyor Systems	Pilot Modular Conveyor Systems	Reduces handling, improves flow, and boosts efficiency

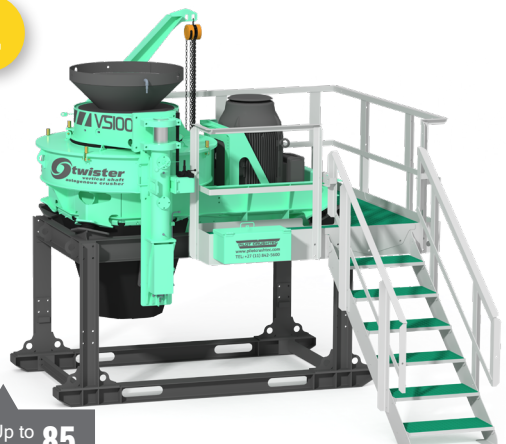


1.



Up to **50**
Tonnes Per
Hour

2.



Up to **85**
Tonnes Per
Hour

REAL-WORLD IMPACT: FROM BOTTLES TO VALUE

A Hotel Group's Transformation (Rompi™):

A well-known hotel group across South Africa installed Rompi™ crushers in several locations.

The results?

- Glass waste volume dropped by 80%.
- Storage rooms became safer and more organized.
- The hotels began earning revenue by partnering with a local glass recycler.

Industrial Upgrade (VS 100 + Conveyors):

A major glass recycling plant adopted Pilot Crushtec's VSI crusher along with integrated conveyor systems.

The results?

- They processed over 10 tons of glass per hour.
- Crushed glass was fed straight into a remelting furnace.
- Labor needs dropped, recycling rates soared, and emissions from glass production were slashed.

THE BOTTOM LINE

Whether you're clearing out a few bottles behind the bar or running a full-scale recycling operation, Pilot Crushtec International has a solution that fits.

Their equipment does more than crush glass—it helps you:



Improve safety and efficiency



Cut waste and costs



Contribute to a circular economy



And make a measurable difference for the environment

At the end of the day, it's not just about crushing—it's about creating value from waste, and turning glass into opportunity.



SPEAK TO AN EXPERT

Pilot Crushtec International (Pty) Ltd

Physical address: 26 Yaldwyn Road Witfield / Jet Park Boksburg South Africa

Postal address: P.O. Box 30032 Jet Park 1469 South Africa

GPS Coordinates: S 26°10.335' E028°13.085'

Office Tel: +27 11 842 5600

Email: sales@pilotcrushtec.com

PILOT CRUSHTEC®

More than machines, we build trust.



**PROUDLY DESIGNED
& MANUFACTURED
IN SOUTH AFRICA**